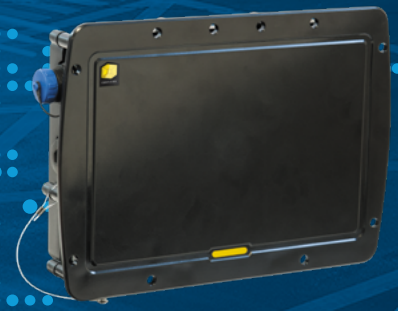


SPEED MEASUREMENT

ITSDETECTOR 350



ITSDETECTOR 350, NON-INTRUSIVE SOLUTION

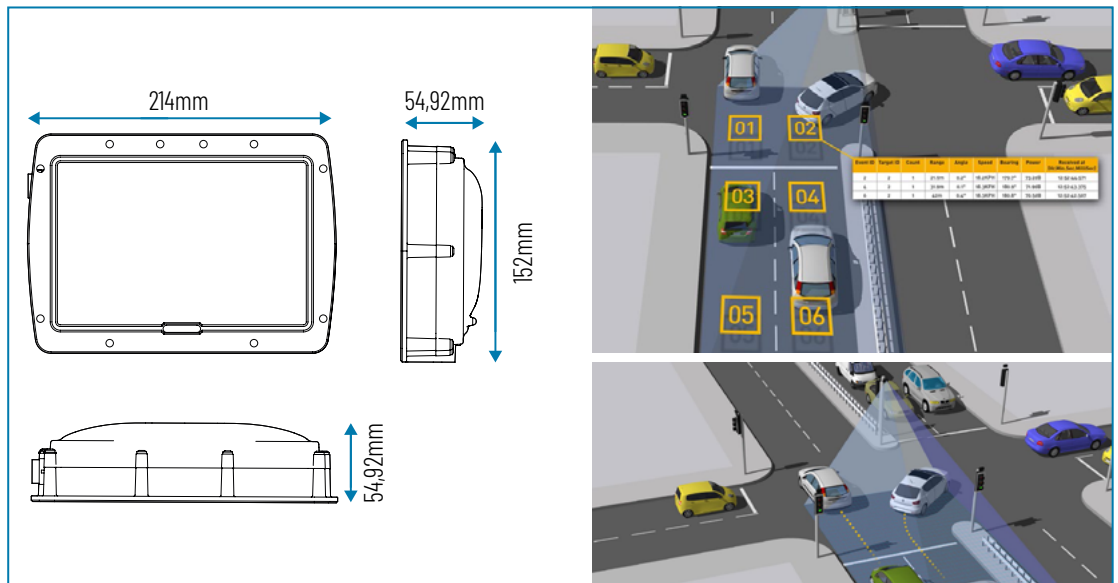
ITSDETECTOR 350 is a continuous microwave FMCW antenna developed by the British company AGD - Intelligent Detection Systems - which uses a new frequency modulation technology to determine the travel speed, distance, angle and direction of the vehicle, eliminating the need for inductive loops and, consequently, works on the driving lane.

ITSDETECTOR 350 is bringing a key evolution to the market that will optimize the vehicle monitoring service.

The sensor can monitor up to four driving lanes at the same time. Its 40° aperture allows for identifying prohibited lane changes or cross-overs.

USES

- Multiple-lane speed surveillance
- Red light crossing surveillance
- Prohibited turn location surveillance
- Surveillance of prohibited area occupancy
- Intersection obstruction surveillance



MAIN FEATURES

- Simultaneous monitoring of up to 32 vehicles in multiple lanes
- Precise position measurement of target vehicles
- Speed measurement between 4 and 85 meters from the installation point
- Speed measurement up to 260 km/h
- 40° field of view
- Up to 12 user-selected capture points
- Data sent via 100 Mbps or 1 Gbps Ethernet
- Data sent via RS-422 serial
- Perfectly compatible with the ITSCAM line

TECHNICAL SPECIFICATIONS

Precision of the ITSDETECTOR 350

Simulated speed of up to 260 km/h	+/- 1km/h
Speed reading resolution	0.1km/h
Vehicle position (up to 85 m)	+/- 1m
Position reading resolution	0.1 m
Simulated angle	+/- 1°
Angle reading resolution	0.1°

Specific Sensor Information

Horizontal range	4 to 85m
Installation height	3 to 6m
Horizontal beam coverage	Approximately 40°
Vertical beam coverage	Approximately 20°
Monitoring rate	94 fps
Monitored speed	4 to 260 km/h
Operating temperature	-30 °C to + 70 °C

